

# Features

## M10 MINI GNSS RECEIVER

Signal Tracking	
Channels	965
GPS	L1 C/A, L2C, L2P, L5
GLONASS	L1 C/A, L1P, L2C/A, L2P
Beidou	B1, B2, B3
Beidou Global Signal	B1C, B2a, B2b
Galileo	E1, E5a, E5b, E6, E5 AltBOC
QZSS	L1, L2C, L5
IRNSS	L5
SBAS	WAAS, EGNOS, MSAS, GAGAN,SDCM

Positioning Specifications	
Post processing	2.5 mm + 1 ppm Horizontal 5 mm + 1 ppm Vertical
RTK	8 mm + 1 ppm Horizontal 15 mm + 1 ppm Vertical
DGPS	<0.4 m RMS
SBAS	1m 3D RMS
Standalone	1.5m 3D RMS

Data Format	
Correction data I/O	RTCM2.X, 3.X, CMR/CMR+(GPS Only) NMEA 0183 GSV, RMC, HDT, GGA, GSA, ZDA, VTG, GST; PTNL,PJK; PTNL, AVR; PTNL, GGK
Position data output	ComNav Binary BINEX Data Position data output rate up to 20hz

Electrical	
Power supply	5V 1.5A DC with TYPE-C
Power consumption	<2W
Battery Capacity	3000mAh, up to 6 hours typically

Physical	
Size	64mm×130mm×25.8mm
Weight	About 175g
Antenna	In-built Satellite Antenna
Indicator Light	1*Power light, 1*Satellite light, 1*Differential light
Button	1*Power button, 1*SOS button

Communications	
Bluetooth 4.0	Compatible with AndroidTM and WindowsTM Mobile OS
4G Module	Support Ntrip and Tcp protocol

Environments	
Working temperature	-20 C to +60 C
Storage temperature	-40 C to +70 C
Humidity	100% no condensation
Shock	Designed to survive a 1m drop onto concrete
Waterproof and Dustproof	IP67

SinoGNSS Pocketable Positioning Solution Ver.2021.12.31

## M900SE GNSS RECEIVER

Signal Tracking	
Channels	965
GPS	L1 C/A, L2C, L2P, L5
GLONASS	L1 C/A, L1P, L2C/A, L2P
Beidou	B1, B2, B3
Beidou Global Signal	B1C, B2a, B2b
Galileo	E1, E5a, E5b, E6, E5 AltBOC
QZSS	L1, L2C, L5
IRNSS	L5
SBAS	WAAS, EGNOS, MSAS, GAGAN,SDCM

Data Format	
Correction data I/O	RTCM2.X, 3.X, CMR/CMR+(GPS Only) NMEA 0183 GSV, RMC, HDT, GGA, GSA, ZDA, VTG, GST; PTNL,PJK; PTNL, AVR; PTNL, GGK
Position data output	ComNav Binary BINEX Data Position data output rate up to 20hz

Communications	
4G Module	Support Ntrip protocol
3 TNC connectors	1 UHF connector 2 external GNSS antenna connectors
2 7-pin lemo ports	Standard RS232, CAN, USB2.0 protocol 1 CAN BUS/COM3/power 1 USB/COM1/power
1 SMA connector	4G antenna connector
1 RJ45 connector	Ethernet interface
1 OLED display	Status monitoring
4 LEDs	Indicating power, satellite tracking, differential data and GPRS status

Environments	
Working temperature	- 40 C to +75 C
Storage temperature	- 55 C to +85 C
Humidity	95% no condensation
Shock	Designed to survive a 1m drop onto concrete
Waterproof and Dustproof	IP68

Specifications subject to change without notice.



M10 mini

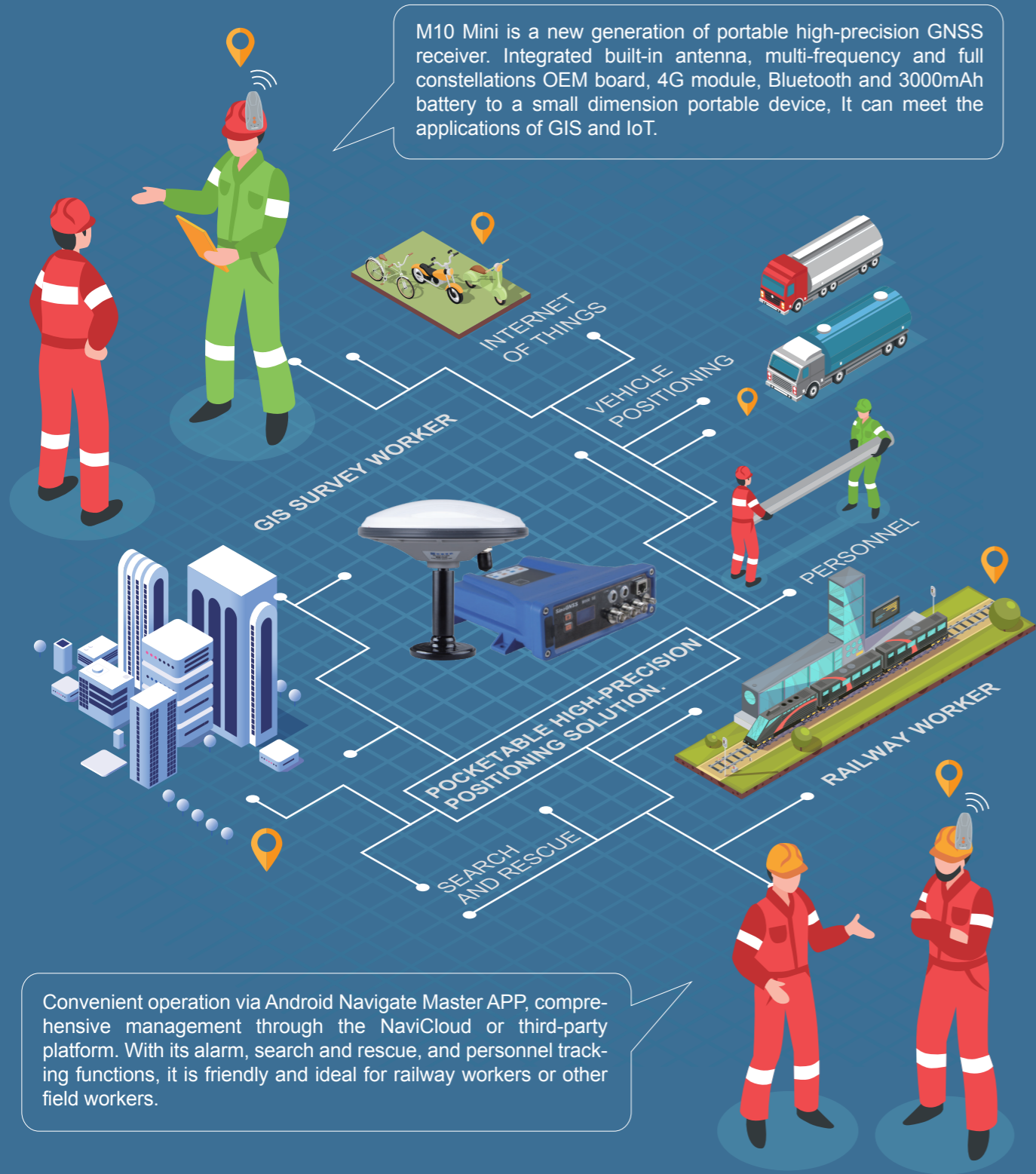
For Personnel Positioning & GIS

# POCKETABLE HIGH-PRECISION POSITIONING SOLUTION.



M900SE Base



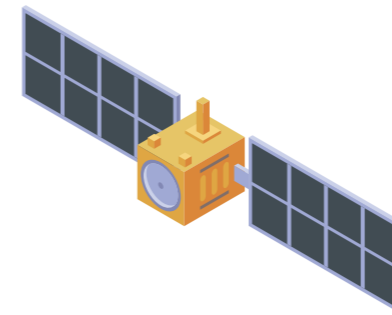


M10 Mini is a new generation of portable high-precision GNSS receiver. Integrated built-in antenna, multi-frequency and full constellations OEM board, 4G module, Bluetooth and 3000mAh battery to a small dimension portable device, It can meet the applications of GIS and IoT.

Convenient operation via Android Navigate Master APP, comprehensive management through the NaviCloud or third-party platform. With its alarm, search and rescue, and personnel tracking functions, it is friendly and ideal for railway workers or other field workers.

- ⚙️ Specially designed GNSS receiver for personnel tracking and security.
- ⚙️ Tracks full GNSS constellations and multiple frequencies with in-built antenna.
- ⚙️ Obtains accuracy positioning from sub-meter to centimeter.
- ⚙️ 6 hours of battery life and support mobile power charging via USB.
- ⚙️ Same dimension and weight as smartphones, supports built-in Sim card function.

## SATELLITE



### FULL CONSTELLATIONS

Full GNSS constellations and Multiple-frequency are tracked and calculated.

## BASE STATION



### M900SE GNSS RECEIVER USED FOR REFERENCE STATION.

It tracks all current and future satellites, provide centimeter-level positioning.

It supports an accuracy of **1-20 cm** with increasing distance within baseline range of **200 kilometers**.

## CONTROL CENTER



### SINO GNSS SEVER IS FREE TO USE OR: CDC+ INSTALLED IN CLOUD SERVER.

Convenient and fast user management, no limit on the number of users